

### Services and Facilities

Check the park website [www.nps.gov/yell](http://www.nps.gov/yell) or newspaper for seasonal dates of services and facilities.

**Accessibility Guide**  
Entrance stations and visitor centers offer a free guide, *Accessibility in Yellowstone*, describing wheelchair-negotiable facilities.

**Emergencies: Call 911**

- Medical clinic
- Ranger station
- Campground
- Lodging
- Food service
- Picnic area
- Store
- Gas station (some have auto repair)
- Recycling
- Self-guiding trail or boardwalk
- Horseback riding
- Boat launch
- Parking area (see detail maps at right)

#### Mammoth Hot Springs 6239 ft 1902 m

Upper Terrace Drive  
No buses, trailers, or RVs; closed in winter

Albright Visitor Center  
Mammoth Hot Springs Terraces  
Park Headquarters

#### Old Faithful 7365 ft 2245 m

Old Faithful Visitor Education Center  
Old Faithful Lodge  
Snow Lodge

No camping or overnight recreational vehicle parking

#### Canyon Village 7918 ft 2413 m

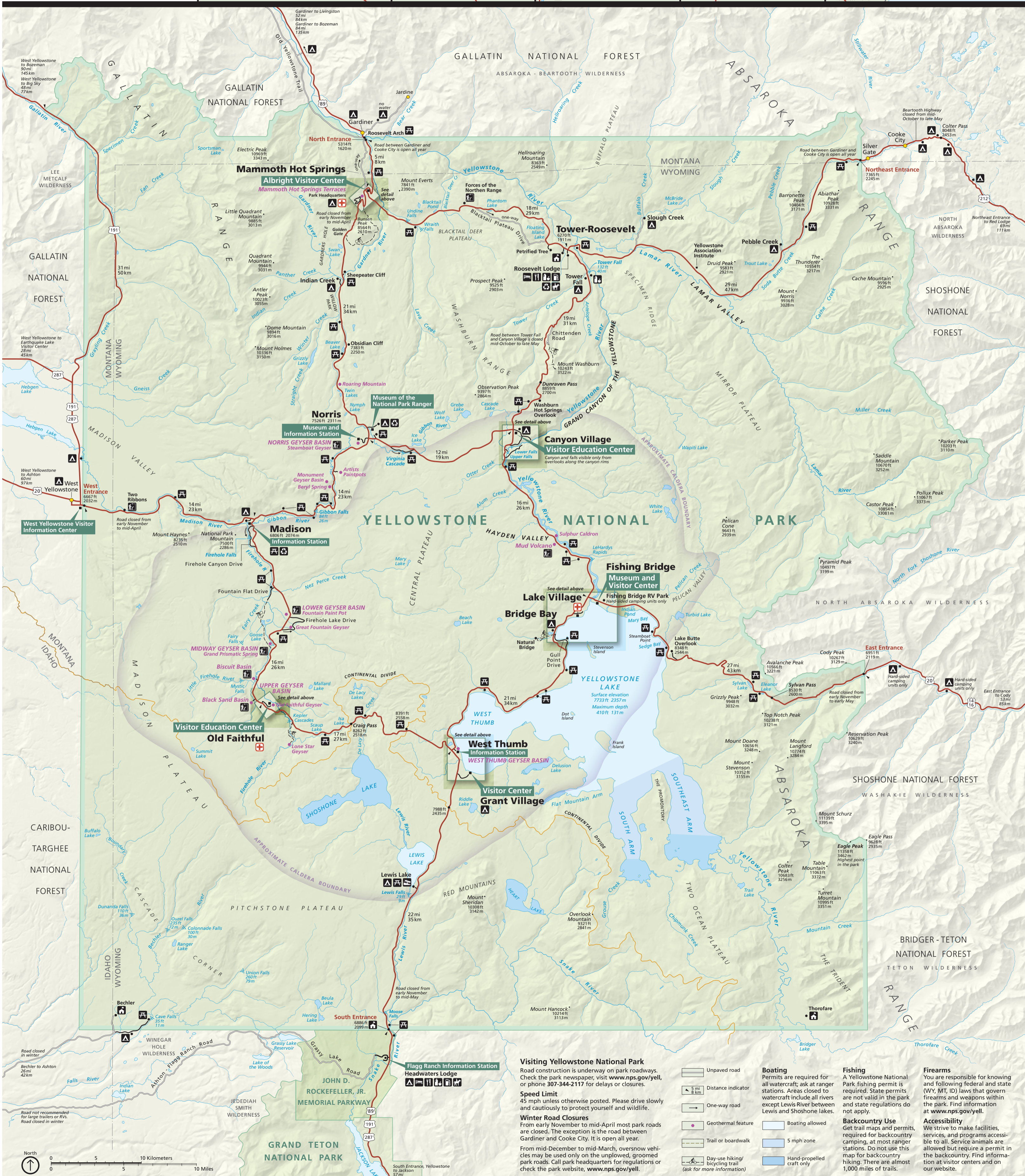
Canyon Village Visitor Education Center  
Tower-Roosevelt  
Roosevelt Lodge  
Tower Falls

#### West Thumb and Grant Village 7770 ft 2368 m

West Thumb Information Station  
Grant Village Visitor Center  
West Thumb Geysers Basin

#### Fishing Bridge and Lake Village and Bridge Bay 7735 ft 2358 m

Fishing Bridge Museum and Visitor Center  
Lake Village  
Bridge Bay



#### Visiting Yellowstone National Park

Road construction is underway on park roadways. Check the park newspaper, visit [www.nps.gov/yell](http://www.nps.gov/yell), or phone 307-344-2117 for delays or closures.

#### Speed Limit

45 mph unless otherwise posted. Please drive slowly and cautiously to protect yourself and wildlife.

#### Winter Road Closures

From early November to mid-April most park roads are closed. The exception is the road between Gardiner and Cooke City. It is open all year.

From mid-December to mid-March, oversnow vehicles may be used only on the unplowed, groomed park roads. Call park headquarters for regulations or check the park website, [www.nps.gov/yell](http://www.nps.gov/yell).

- Unpaved road
  - Distance indicator
  - One-way road
  - Geothermal feature
  - Trail or boardwalk
  - Day-use hiking/bicycling trail (ask for more information)
  - Boating allowed
  - 5 mph zone
  - Hand-propelled craft only
- #### Boating
- Permits are required for all watercraft; ask at ranger stations. Areas closed to watercraft include all rivers except Lewis River between Lewis and Shoshone lakes.
- #### Fishing
- A Yellowstone National Park fishing permit is required. State permits are not valid in the park and state regulations do not apply.
- #### Backcountry Use
- Get trail maps and permits required for backcountry camping, at most ranger stations. Do not use this map for backcountry hiking. There are almost 1,000 miles of trails.
- #### Firearms
- You are responsible for knowing and following federal and state (WY, MT, ID) laws that govern firearms and weapons within the park. Find information at [www.nps.gov/yell](http://www.nps.gov/yell).
- #### Accessibility
- We strive to make facilities, services, and programs accessible to all. Service animals are allowed but require a permit in the backcountry. Find information at visitor centers and on our website.

