

# Homework 03

---

NAT、DHCP、Firewall、Proxy、LDAP

zjlin / yahsieh / hcchuang

# Basic Knowledge

---

## DHCP

- Dynamically assigning IPs to clients

## NAT

- Translating addresses for clients

## Firewall

- Traffic filtering

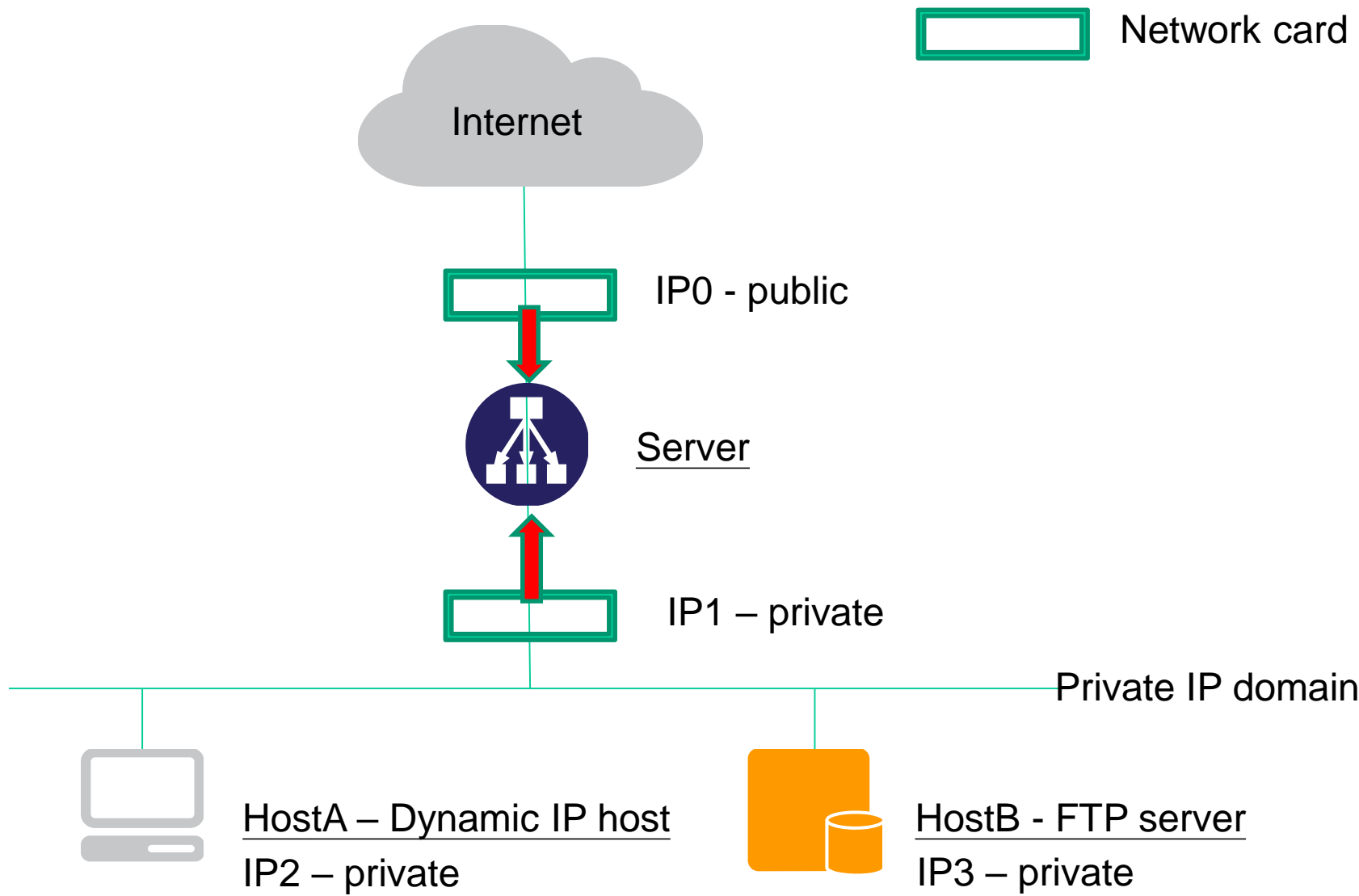
## Proxy

- Intermediary of client and server to translate requests

# Basic Knowledge – Isolated Execution Environment

- ❑ Provide a sandbox with limited access to resource
  - Protect other programs from compromised one
- ❑ OS-level virtualization (Used in this HW)
  - Resource isolation
    - File system, device...
  - Lightweight
  - Easy to manage
- ❑ Implementation
  - FreeBSD: jail
  - Linux: lxc

# Architecture Overview



# Architecture

## ❑ Server

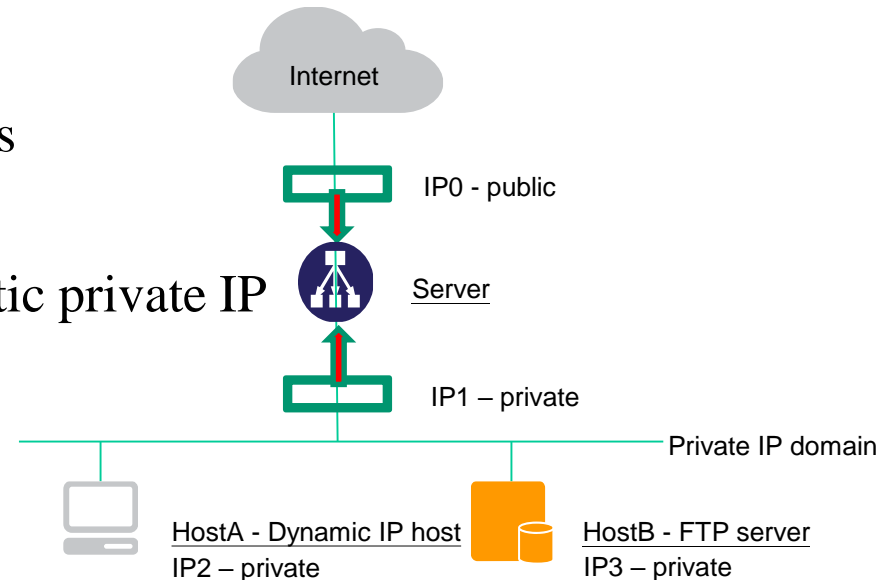
- UNIX-based OS
- Act as a gateway for all services
- DHCP & NAT server
- ✓ A dedicated Public IP and a static private IP

## ❑ HostA

- ✓ A private IP via DHCP

## ❑ HostB

- An isolated execution environment on Server
- Runs FTP service
- ✓ A static private IP



# Requirement – NAT & DHCP

---

## ❑ NAT

- HostA & HostB can access Internet via Server

## ❑ DHCP

- Provided by Server
- Static range should be excluded

# Requirement – Firewall

## ❑ Firewall

- Deny all connections come from <BadHost>
- Allow the connection from **140.113.235.151 ~ 140.113.235.154** to access HostB's **FTP** server
- Allow the connection from **140.113.235.151 ~ 140.113.235.154** to access HostB's **SSH** server (Server will redirect the request for port 222 to HostB's SSH server)
- Drop packets from **140.113.235.131 ~ 140.113.235.134** to access HostB's **FTP** and **SSH** server, and response TCP RST/ICMP unreachable
- The connection from other public IP to access HostB's **FTP** and **SSH** server should be denied and **not** response TCP RST/ICMP unreachable
- All public IP can't send ICMP echo request packets to Server (will **not** response ICMP ECHO-REPLY packets)

# Requirement – Proxy

---

## ❑ FTP proxy

- Setup an FTP proxy on Server
- All FTP requests should be proxied to Host

## ❑ HTTP proxy

- Setup a **transparent** proxy on Server
- All http traffic should pass through this TP

## ● Hint

- [ftp-proxy\(8\) \(ftp\)](#)
- [www/squid \(http\)](#)
- [www/privoxy \(http\)](#)



# Requirement – FTP with LDAP

---

## Authentication

- Use LDAP-Backend

## MemberOf

- Create group “sysgroup“
- Only member in “sysgroup” can login
- Use memberOf overlay

## LDAP config should use **olc**(on-line configuration)

# Additional – DHCP Client in Jail/LXC

---

## ❑ Use IOCell

- Make sure to upgrade FreeBSD version  $\geq 11.1$ -RELEASE
- Compile kernel to support VIMAGE, RACCT, RCTL
- ZFS

## ❑ LXC

- privileged or unprivileged

## ❑ Reference

- <https://github.com/bartekrutkowski/iocell>
- <http://iocell.readthedocs.io/en/latest/basic-use.html>
- [https://wiki.archlinux.org/index.php/Linux\\_Containers](https://wiki.archlinux.org/index.php/Linux_Containers)

# Hand-in

---

## Demo

- 5/23 (Wed.) 16:00~18:00 19:00~21:00

## Help

- Email [ta@nasa.cs.nctu.edu.tw](mailto:ta@nasa.cs.nctu.edu.tw)
- Goto CSCC to ask professional 3F at office hour!